



PWSD#3 of TANEY COUNTY

507 Rinehart Road, Branson, Missouri 65616
417-337-8451 office 417-334-7206 fax
417-239-7072-emergency contact
Email - info@taneywater3.com Website - www.taneywater3.com

Dear Public Water Supply District Customer:

You may have read about the EPA requirements for lead testing in schools and other facilities. This regulation stems from a lead related incident which happened a few years ago. As a response to that, EPA, in addition to requiring schools and other facilities to perform lead testing, is requiring all water systems to collect information to prepare an inventory of service lines within each system. The service lines are the lines connecting your home or business to the water main. This inventory must be completed by October of 2024.

District personnel are working on the service line inventory from the main to the point where the service line exits the meter pit. However, EPA is also requiring water systems to contact customers to seek their assistance in identifying service line material within the home or business. Due to this, we are asking each customer to identify the type of service line where the line enters their home or business.

To assist with identifying service line types, there is a packet of information included with this letter to show various types of service lines. Please take a moment to review the information then look at your interior service line to compare it to one of the examples. Once that is done, please identify the type of line on the included form, complete the form (including a picture if possible) and return it to the office at 507 Rinehart Road or email it to info@taneywater3.com.

Please let me know if you have any questions.

Very truly yours,

Ed Young, General Manager

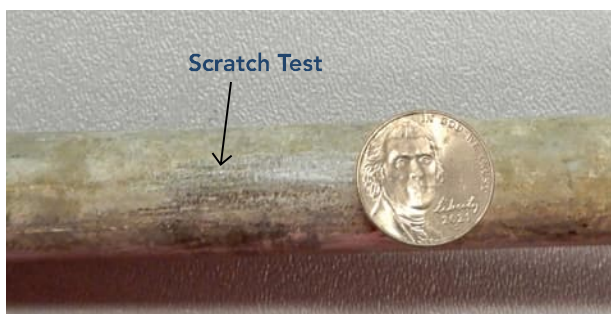
How to Identify your Water Service Line Material

Follow the steps on this page to perform a self-identification of your service line. Use the photographs to help determine your water service line material.



Copper Pipe

Copper pipe may be shiny, like a new penny, or orange/brown in color. When scratched it will shine like a new penny. Copper pipe is not magnetic, so a magnet **will not** stick to it.



Galvanized Steel Pipe

Galvanized steel pipe may be shiny or dull, silver or gray in color, and shiny like a new nickel when scratched. A magnet **will** stick to it.



Lead Pipe

Lead pipe will be a dull silver, or blue-gray in color. Lead pipe will be shiny when scratched. Lead pipe is not magnetic, so a magnet **will not** stick to it.



Wipe Joint

If your service line has a wipe joint, you have a lead service line. No scratch test is needed.

To perform a self-identification of your service line to find out if it is made of lead, follow these simple steps to perform a scratch test or other identification method:

1. Locate the water shut-off valve. It should be immediately after the service line comes through the foundation or basement wall.
2. If the service line is painted, lightly sand it with sandpaper to expose the metal. Carefully scratch the metal pipe with a key or coin. Do not use a sharp tool or knife. Be careful not to make a hole in the pipe. If the pipe metal is shiny like a new nickel, it could be lead or steel.
3. To find out if the pipe is lead or steel, use a strong magnet. Place it on the pipe. If the magnet sticks, it is galvanized steel pipe. If it doesn't stick, it is lead.
4. **Alternative 1:** You can buy a lead test kit at a hardware, or home improvement store. These kits are used to test lead paint but also work on lead pipe. The test kit will determine the material of the pipe, but it is not for testing the water in the pipe.
5. **Alternative 2:** You can have a licensed plumber inspect your service line to determine if the pipe material is made of lead.



PWSD#3 of TANEY COUNTY

507 Rinehart Road, Branson, Missouri 65616
417-337-8451 office 417-334-7206 fax
417-239-7072-emergency contact
generalmanager@taneywater3.com www.taneywater3.com

Service Address _____

Are you the: Owner Tenant Property Manager Other

Your Name _____

Phone Number (optional) _____

Email Address (optional) _____

May we add your contact information to our customer database? Yes No

Is this a residence, business, barn, or other structure?

Please indicate type if "Other structure" _____

What year were the water lines established in the structure, if known. _____

Service line material at the point of entry (inlet) to your home (see attached exemplar)?

Lead Copper Galvanized Other (Plastic/PVC/Pex/etc.)

PIPE MATERIAL	SCRATCH COLOR	DOES MAGNET STICK?
LEAD	SHINY SILVER	NO
COPPER	ORANGE (PENNY)	NO
GALVANIZED STEEL	DULL GRAY	YES
PLASTIC	N/A	NO

Has the line from the water meter to your home/facility been replaced?

Yes No

If yes, please provide the date and material used for replacement.

Optional – please email a photo of the water line entering your home from the meter, including address in the email, to: info@taneywater3.com

Please contact the PWSD #3 office if you need assistance with this request.

Contact information - info@taneywater3.com or 417-337-8451

Thank you for helping our utility meet compliance with the EPA regulation.